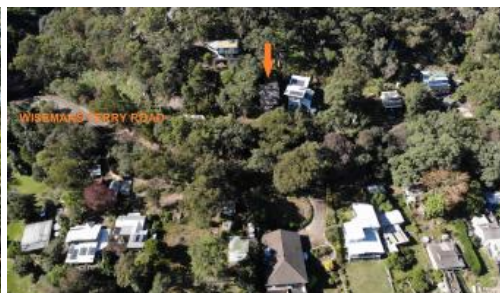


Sold

5612 Wisemans Ferry Rd, Gunderman



Looking for a Project? This is the one!

Ideal for the home handyman or tradie to complete!

Overlooking the Hawkesbury River sits an unfinished project with the majority of the hard work already done. The solid construction to lock up stage consists of slab on ground to the lower garage and entry, Hebel power panels finished with texture coating to the exterior and color-bond roofing. All the plasterboard to complete the interior is on site.

The split level design with 2 bedrooms, 2 bathrooms has an open plan living area opening onto the verandah, ideal to sit, relax and take in the views of Sentry Box Reach on the Hawkesbury River. Situated on an approximately 556 square meter block.

Gunderman is less than 2 hours from Sydney and conveniently accessed via Mangrove Mountain or Wisemans Ferry. This home is located approximately 15 minutes from Wisemans

 2  2  2  556 m2

Price	SOLD
Property Type	Residential
Property ID	82
Land Area	556 m2

Agent Details

Paul Vella - 0418 649 294

Office Details

Vella Iverson Real Estate
4384 Old Northern Rd
Maroota, NSW, 2756 Australia
02 4566 8383

VELLAIVERSON

Ferry and 10 minutes to Spencer. A popular area for both permanent residence or weekender and has a growing demand for holiday letting.

Contact me for further details of the construction and to arrange an inspection.

Paul Vella - 0418 649294.

The above information provided has been furnished to us by the vendor/s. We have not verified whether or not that information is accurate and do not have any belief in one way or the other in its accuracy. We do not accept any responsibility to any person for its accuracy and do no more than pass it on. All interested parties should make and rely upon their own inquiries in order to determine whether or not this information is in fact accurate.